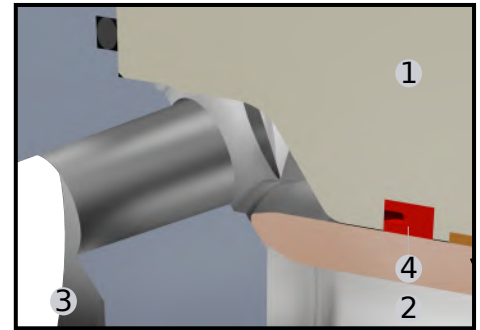


Parts	Materials	
1 Body	1.4021QT	1.4006QT
2 Piston	1.4301	1.4313QT
3 Outlet plate	1.4021QT	1.4313QT
4 Seals	NBR Polyurethane	
5 Control oil / water taps		
6 Control leakage bores		



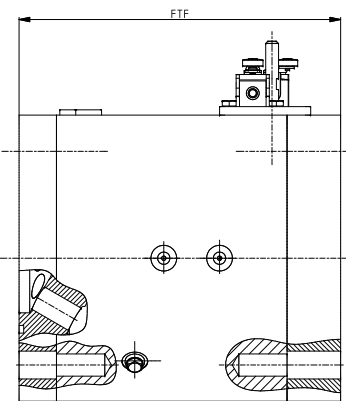
FEATURES & OPTIONS

- heavy forged design
- concentric orifice for energy dissipation
- shut-off device in pressurized piping system
- max medium velocity 20m/s
- opening / closing by filtered water line or hydraulic-oil system
- optical and electrical position indicator
- piston moves axially
- no lubrication points / maintenance free

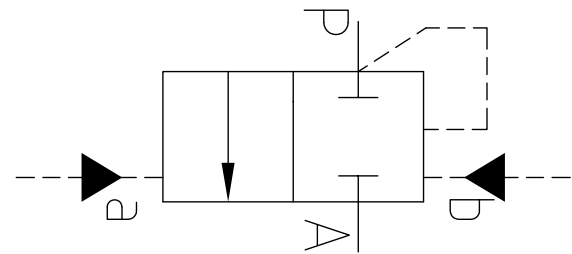
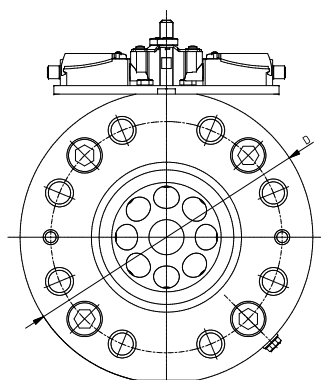
- metal-to-metal sealing system
- self-closing tendency under internal water pressure
- for water service in temperature up to 70°C / 158°F

OPTIONS

- + additional hydraulic and electrical equipment
- + wiring with terminal box
- + linear position indicator



Main dimensions



Hydraulic diagram

DN	FTF	PN16		PN25		PN40		PN63		PN100		PN160	
		D	Valve weight	D	Valve weight	D	Valve weight	D	Valve weight	D	Valve weight	D	Valve weight
[mm]	[mm]	[mm]	[kg]	[mm]	[kg]	[mm]	[kg]	[mm]	[kg]	[mm]	[kg]	[mm]	[kg]
50	220	165	35	165	35	165	35	180	40	195	50	195	50
65	240	185	45	185	45	185	45	205	55	220	65	220	65
80	280	200	55	200	55	200	55	215	65	230	75	235	75
100	320	220	75	235	100	235	100	250	115	265	125	270	130
125	340	250	100	270	130	270	130	295	150	315	175	315	175
150	380	285	150	300	170	300	170	345	220	355	235	355	235
200	420	340	220	360	260	375	280	415	340	430	370	430	370
250	450	405	330	425	370	450	430	470	470	505	540	515	560
300	520	460	460	485	540	515	610	530	640	585	780	585	780
400	620	580	790	620	970	660	1100	670	1140	715	1290		
500	680	715	1310	730	1370	755	1460	800	1640	870	1940		

Valve weights in dimensions table are given without a drive weight.

Flange in accordance with EN 1092-1. ANSI and MSS flanges available on request.

Dimensions and weights are preliminary only. Final dimensions and weights are established after detail design.

Other materials are available upon request.

Drawings are schematic only.